



# Certificate of Analysis

## CANNABUSINESS LABORATORIES, LLC

### Customer:

DG Agtek  
215A Chaplin Rd.  
Eastford, CT 06242

Received Date **6/20/2023**

COA Released **6/23/2023**

Comments

Sample ID **230620015**

Order Number **CB230620008**

Sample Name **Sweet Elite Young Sim 10**

External Sample ID

Batch Number

Product Type **Flower**

Sample Type **Flower**

### CANNABINOID PROFILE

Analyte	LOQ (%)	% Dry Weight	mg/g
CBC	0.01	ND	ND
CBD	0.01	0.802	8.020
CBDa	0.01	8.522	85.22
CBDV	0.01	0.397	3.975
CBG	0.01	0.086	0.864
CBGa	0.01	0.287	2.868
CBN	0.01	ND	ND
d8-THC	0.01	ND	ND
d9-THC	0.01	0.084	0.839
THCa	0.01	0.202	2.017
<b>Total Cannabinoids</b>		<b>10.38</b>	<b>103.8</b>
<b>Total Potential THC</b>		<b>0.261</b>	<b>2.608</b>
<b>Total Potential CBD</b>		<b>8.276</b>	<b>82.76</b>
<b>Total Potential CBG</b>		<b>0.338</b>	<b>3.382</b>

**Ratio of Total Potential CBD to Total Potential THC** **31.71 : 1**

**Ratio of Total Potential CBG to Total Potential THC** **1.30 : 1**

*\*Total Cannabinoids refers to the sum of all cannabinoids detected.*

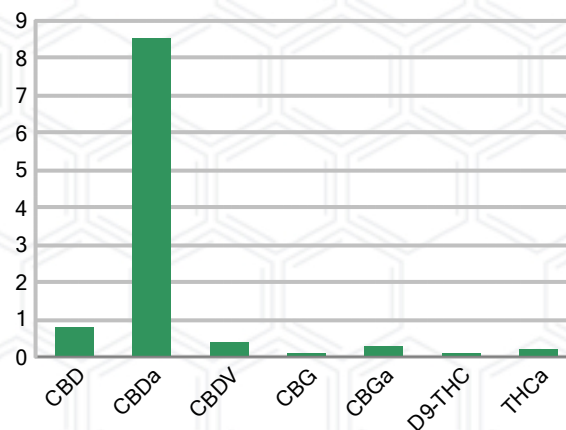
*\*Total Potential CBD = (0.877 x CBDa) + CBD. \*Total Potential THC = (0.877 x THCa) + THC. \*Total Potential CBG = (0.877 x CBGa) + CBG.*

*\*Total Potential THC/CBD are calculated to take into account the loss of an acid group during decarboxylation.*

### SAMPLE IMAGE



### CANNABINOIDS % Dry Weight



*J. Hobgood*  
Laboratory Manager

SIGNATURE

Jamie Hobgood

LABORATORY MANAGER

06/23/2023 7:58 AM

DATE

This product has been tested by CannaBusiness Laboratories using validated testing methodologies and a quality system. Values reported relate only to the product tested. CannaBusiness Laboratories makes no claims as to the efficacy, safety, or other risks associated with any detected or non-detected levels of any compounds reported herein. This Certificate shall not be reproduced except in full, without the written permission of CannaBusiness Laboratories. Photo is of sample received by the lab and may vary from final packaging. The results apply to the sample as received.



# Certificate of Analysis

## CANNABUSINESS LABORATORIES, LLC

### Customer

DG Agtek  
215A Chaplin Rd.  
Eastford, CT 06242



**Sample Name:** Sweet Elite Young Sim  
10  
**Sample ID:** 230620015  
**Order Number:** CB230620008  
**Product Type:** Flower  
**Sample Type:** Flower  
**Received Date:** 06/20/2023  
**Batch Number:**  
**COA released:** 06/23/2023 7:58 AM

### Potency (mg/g) Dry Weight

Date Tested: 06/21/2023

Method: CB-SOP-028

Instrument:

<b>0.261 %</b>	<b>8.276 %</b>	<b>10.38 %</b>	<b>103.8 mg/g</b>
Total THC	Total CBD	Total Cannabinoids	Total Cannabinoids

Analyte	Result	Units	LOQ	Result	Units
CBC (Cannabichromene)	ND	%	0.010	ND	mg/g
CBD (Cannabidiol)	0.802	%	0.010	8.020	mg/g
CBDa (Cannabidiolic Acid)	8.522	%	0.010	85.22	mg/g
CBDV (Cannabidivarin)	0.397	%	0.010	3.975	mg/g
CBG (Cannabigerol)	0.086	%	0.010	0.864	mg/g
CBGa (Cannabigerolic Acid)	0.287	%	0.010	2.868	mg/g
CBN (Cannabinol)	ND	%	0.010	ND	mg/g
D8-THC (D8-Tetrahydrocannabinol)	ND	%	0.010	ND	mg/g
D9-THC (D9-Tetrahydrocannabinol)	0.084	%	0.010	0.839	mg/g
THCa (Tetrahydrocannabinolic Acid)	0.202	%	0.010	2.017	mg/g

### Potency (mg/g) Dry Weight

Date Tested: 06/21/2023

Method: CB-SOP-028

Instrument:

Analyte	Result	Units	LOQ	Result	Analyte	Result	Units	LOQ	Result
Percent Moisture	13	%	0.010						



PJLA  
Testing  
Accreditation #109588

*J. Hobgood*  
Laboratory Manager

Jamie Hobgood

06/23/2023 7:58 AM

SIGNATURE

DATE

NT = Not tested, ND = Not detected; LOQ = Limit of Quantitation; <LOQ = Detected; >ULOL = Above upper limit of linearity; CFU/g = Colony forming units per 1 gram; TNTC = Too numerous to count

This product has been tested by CannaBusiness Laboratories using validated testing methodologies and a quality system. Values reported relate only to the product tested. CannaBusiness Laboratories makes no claims as to the efficacy, safety, or other risks associated with any detected or non-detected levels of any compounds reported herein. This Certificate shall not be reproduced except in full, without the written permission of CannaBusiness Laboratories. Photo is of sample received by the lab and may vary from final packaging. The results apply to the sample as received.