



CannaBusiness Laboratories, LLC

2554 Palumbo Dr. Lexington, KY 40509

Certificate of Analysis

Customer:

DG Agtek
215A Chaplin Rd.
Eastford, CT 06242

Sample ID: **211101045**

Order Number: **CB211101017**

Sample Name: **Muscle Gel XTRA**

Collected Date:

Received Date: **11/1/2021**

COA Released: **11/4/2021**

External Sample ID:

Batch Number:

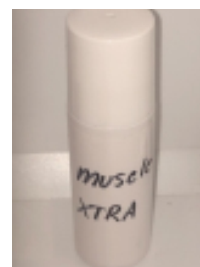
Product Type: **Topical**

Sample Type: **Topical**

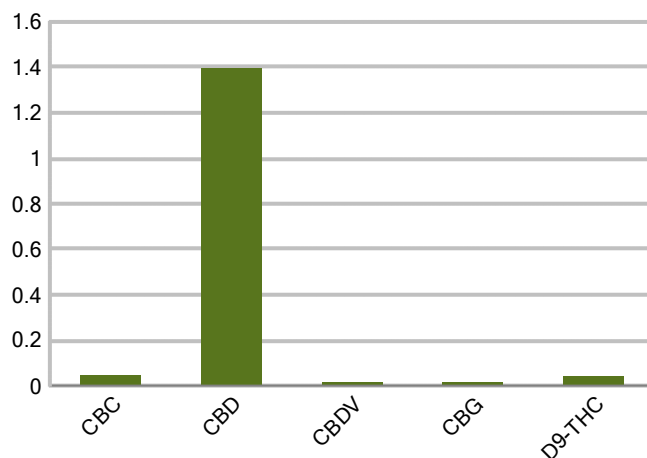
Comments:

CANNABINOID PROFILE

Analyte	LOQ (%)	% weight	mg/g
CBC	0.01	0.047	0.471
CBD	0.01	1.398	13.98
CBDa	0.01	ND	ND
CBDV	0.01	0.014	0.136
CBG	0.01	0.016	0.164
CBGa	0.01	ND	ND
CBN	0.01	ND	ND
d8-THC	0.01	ND	ND
d9-THC	0.01	0.042	0.419
THCa	0.01	ND	ND
Total Cannabinoids		1.517	15.17
Total Potential THC		0.042	0.419
Total Potential CBD		1.398	13.98
Total Potential CBG		0.016	0.164



Cannabinoids (% weight)



Ratio of Total Potential CBD to Total Potential THC 33.29 : 1

Ratio of Total Potential CBG to Total Potential THC 0.38 : 1

**Total Cannabinoids refers to the sum of all cannabinoids detected.*

**Total Potential CBD = (0.877 x CBDa) + CBD. *Total Potential THC = (0.877 x THCa) + THC. *Total Potential CBG = (0.877 x CBGa) + CBG.*

**Total Potential THC/CBD are calculated to take into account the loss of an acid group during decarboxylation.*



Accreditation #109588

Authorized Signature

J. Hobgood
Laboratory Manager

Jamie Hobgood

11/04/2021 12:57 PM

DATE

This product has been tested by CannaBusiness Laboratories using validated testing methodologies and a quality system. Values reported relate only to the product tested. CannaBusiness Laboratories makes no claims as to the efficacy, safety or other risks associated with any detected or non-detected levels of any compounds reported herein. This Certificate shall not be reproduced except in full, without the written permission of CannaBusiness Laboratories. Uncertainty information is available on request. Photo is of sample received by the lab and may vary from final packaging. The results apply to the sample as received. ISO/IEC 17025:2017 Accredited.



CannaBusiness Laboratories, LLC

2554 Palumbo Dr. Lexington, KY 40509

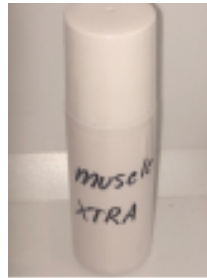


Sample ID: 211101045
Sample Name: Muscle Gel XTRA
Sample Type: Topical

Certificate of Analysis

Customer

DG Aqtek
215A Chaplin Rd.
Eastford, CT 06242



Overall Batch Results

Pesticide	Moisture Content
Potency	Water Activity
Mycotoxins	Heavy Metals
Microbial Screen	Residual Solvents
Terpenoids	

Sample Name: Muscle Gel XTRA

Sample ID: 211101045

Product Type: Topical

Sample Type: Topical

Collected Date:

Received Date: 11/01/2021

Batch Number:

Batch Size:

Sample Size:

COA released: 11/04/2021 12:57 PM

Potency (mg/g)

Date Tested: 11/04/2021

Method: CB-SOP-028

Instrument:

0.042 % Total THC	1.398 % Total CBD	1.517 % Total Cannabinoids	15.17 mg/g Total Cannabinoids
-----------------------------	-----------------------------	--------------------------------------	---

Analyte	Result	Units	LOQ	Result	Units
CBC (Cannabichromene)	0.047	%	0.010	0.471	mg/g
CBD (Cannabidiol)	1.398	%	0.010	13.98	mg/g
CBDa (Cannabidiolic Acid)	ND	%	0.010	ND	mg/g
CBDV (Cannabidivarin)	0.014	%	0.010	0.136	mg/g
CBG (Cannabigerol)	0.016	%	0.010	0.164	mg/g
CBGa (Cannabigerolic Acid)	ND	%	0.010	ND	mg/g
CBN (Cannabinol)	ND	%	0.010	ND	mg/g
D8-THC (D8-Tetrahydrocannabinol)	ND	%	0.010	ND	mg/g
D9-THC (D9-Tetrahydrocannabinol)	0.042	%	0.010	0.419	mg/g
THCa (Tetrahydrocannabinolic Acid)	ND	%	0.010	ND	mg/g



Authorized Signature


Laboratory Manager

Jamie Hobgood

11/04/2021 12:57 PM

Date Time

NT = Not tested, ND = Not detected; LOQ = Limit of Quantitation; <LOQ = Detected; >ULOL = Above upper limit of linearity; CFU/g = Colony forming units per 1 gram; TNTC = Too numerous to count

CannaBusiness Laboratories
License # P-0059: (859)-514- 6999 <https://www.cannabusinesslabs.us>

This product has been tested by CannaBusiness Laboratories using validated testing methodologies and a quality system. Values reported relate only to the product tested. CannaBusiness Laboratories makes no claims as to the efficacy, safety, or other risks associated with any detected or non-detected levels of any compounds reported herein. This Certificate shall not be reproduced except in full, without the written permission of CannaBusiness Laboratories. Uncertainty information is available on request. Photo is of sample received by the lab and may vary from final packaging. The results apply to the sample as received. ISO/IEC 17025:2017 Accredited.